

Courtesy Of Peter Taylor Of MaxWell Progressive

\$189,900 - # 101 396 Silver berry Road Nw, Edmonton

MLS® #E4250159

\$189,900

2 Bedroom, 2.00 Bathroom, 875 sqft
Condo / Townhouse on 0 Acres

Silver Berry, Edmonton, AB

PET FRIENDLY! Modern Luxury two bedroom Condo Located in a Modern Building located in a prime central location. WALKING DISTANCE TO THE MEADOWS RECREATION CENTER. This ground floor unit features:

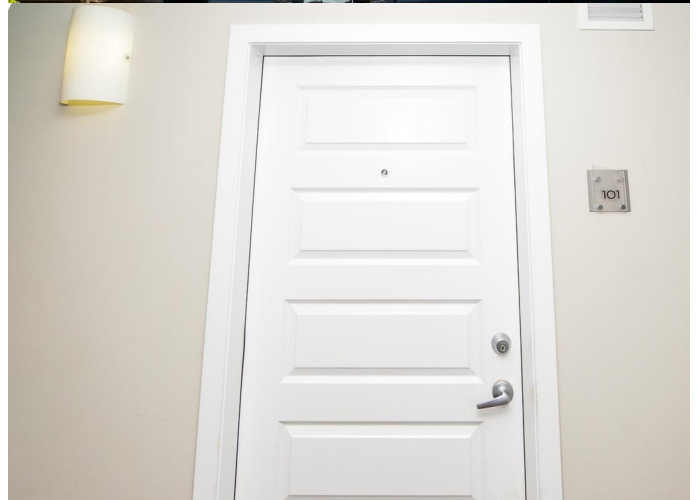
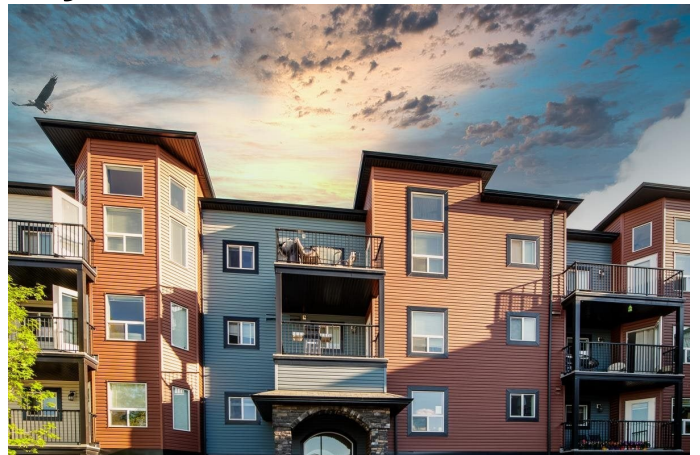
Two generous size bedrooms, Modern Kitchen with pantry, Insuite Laundry. There is plenty of light with the large bay windows, freshly painted walls, NEW flooring throughout, and newer light fixtures. The outdoor patio features a gas outlet for the bbq.

Parking: There is an above ground stall adjacent to the suite, and an underground heated stall. Amenities: ***CAR WASH***, exercise room, Social Room, Guest Suite. Central Location, easy bus route/transportation hub. (Guest Suite is a two bedroom unit and can be rented out to guests for \$75 per night)

Built in 2010

Essential Information

MLS® #	E4250159
Price	\$189,900
Bedrooms	2
Bathrooms	2.00
Full Baths	2
Square Footage	875
Acres	0.01



Bay Windows & Access to Patio

Year Built	2010
Type	Condo
Sub-Type	Lowrise Apartment
Style	Single Level Apartment
Status	ACTIVE

Community Information

Address	# 101 396 Silver_berry Road Nw
Area	Edmonton
Subdivision	Silver Berry
City	Edmonton
County	ALBERTA
Province	AB
Postal Code	T6T 0H1

Amenities

Features	Detectors Smoke, Car Wash, Exercise Room, Guest Suite, Intercom, Laundry-In-Suite, Parking-Visitor, Party Room, Patio, Secured Parking, See Remarks
Parking Spaces	2
Parking	Heated, Underground

Interior

Interior	Ceramic Tile, Laminate Flooring
Interior Features	Dryer, Refrigerator, Stove-Electric, Washer, Microwave Hood Cover, Window Coverings
Heating	Baseboard
Bedrooms on Main Level	Y
Basement	No Basement, None
# of Stories	1

Exterior

Exterior	Vinyl
Exterior Features	Public Transportation, Schools, Shopping Nearby, Landscaped, Park/Reserve, Public Swimming Pool
Roof	Asphalt Shingles
Construction	Wood Frame
Foundation	Concrete

School Information

Elementary	MINCHAU SCHOOL
Middle	KATE CHEGWIN SCHOOL
High	W.P. WAGNER SCHOOL

Additional Information

Condo Fee \$375

Listing information last updated on September 22nd, 2021 at 9:16pm MDT